

GCC Presents...

HICS/ICS ORGANIZATIONAL CHARTS

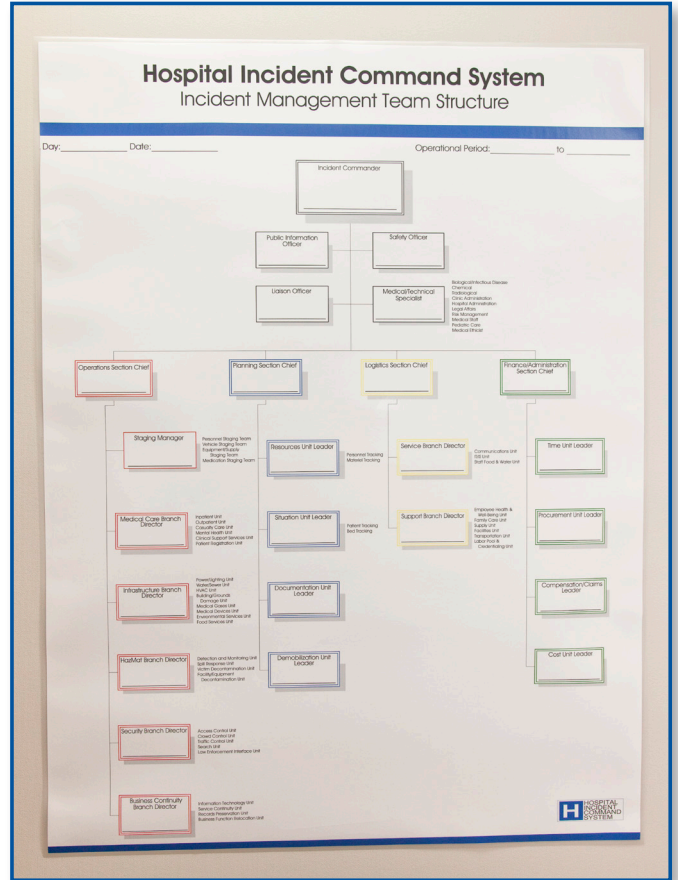
Be Prepared

Hospitals should not plan or respond to emergencies in a vacuum. Successful integration of internal and external resources starts with having an organization chart showing the chain of command and the staffing available to it. Emergency management must be organized and flexible.

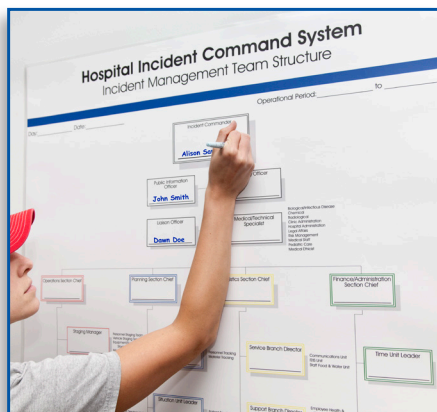
Having a Hospital Incident Command System (HICS) chart that can be populated with the staffing available, then changed as needs and availability change, is an essential tool to management. As staff resources change the chart can be selectively erased and new entries made.

High Quality

The laminated chart is 36" wide by 48" high allowing adequate room for entering the names and contact information for all standard positions. There is plenty of room for margin notes as well. It may be taped or tacked to a wall or any flat surface as needed. Laminated in a matte finish, the chart is highly viewable in different lighting conditions.



Charts can be personalized with your organization's logo.



Write Directly on the Chart!

The charts we offer are smudge-proof using commonly available Sharpie® permanent marker pens, yet may be selectively or completely erased with an alcohol wipe. Thus organization staff changes can be shown as they occur.



- Included in Package**
- Up to 36x48" Laminated Chart
- Sharpie® Marker for smudge-proof use
- Alcohol Wipes for selectively or completely erasing information